

NEWLY ERECTED IDP SHELTERS LOCATED WITHIN NEW SAFETY ZONE (NSZ) - MULATTIVU DISTRICT, SRI LANKA - 6 MAY 2009

Comparison of IDP shelters between 6 May and 19 April 2009 located in the Government-declared

Safety Zone (NSZ) as declared on 8 May 2009 in the Mulattivu district of northern Sri Lanka. Analysis was done

with WorldView-1 satellite imagery recorded on 19 April and 6 May 2009 with a spatial resolution of approximately

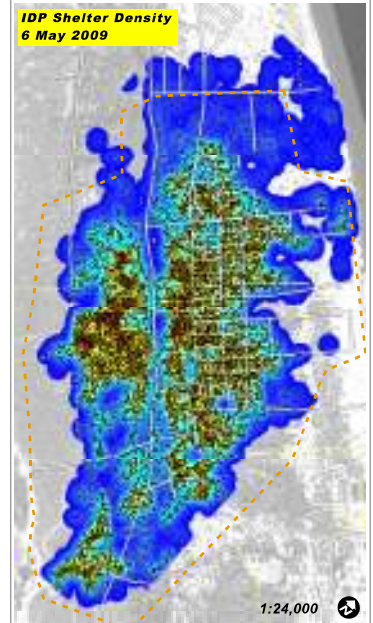
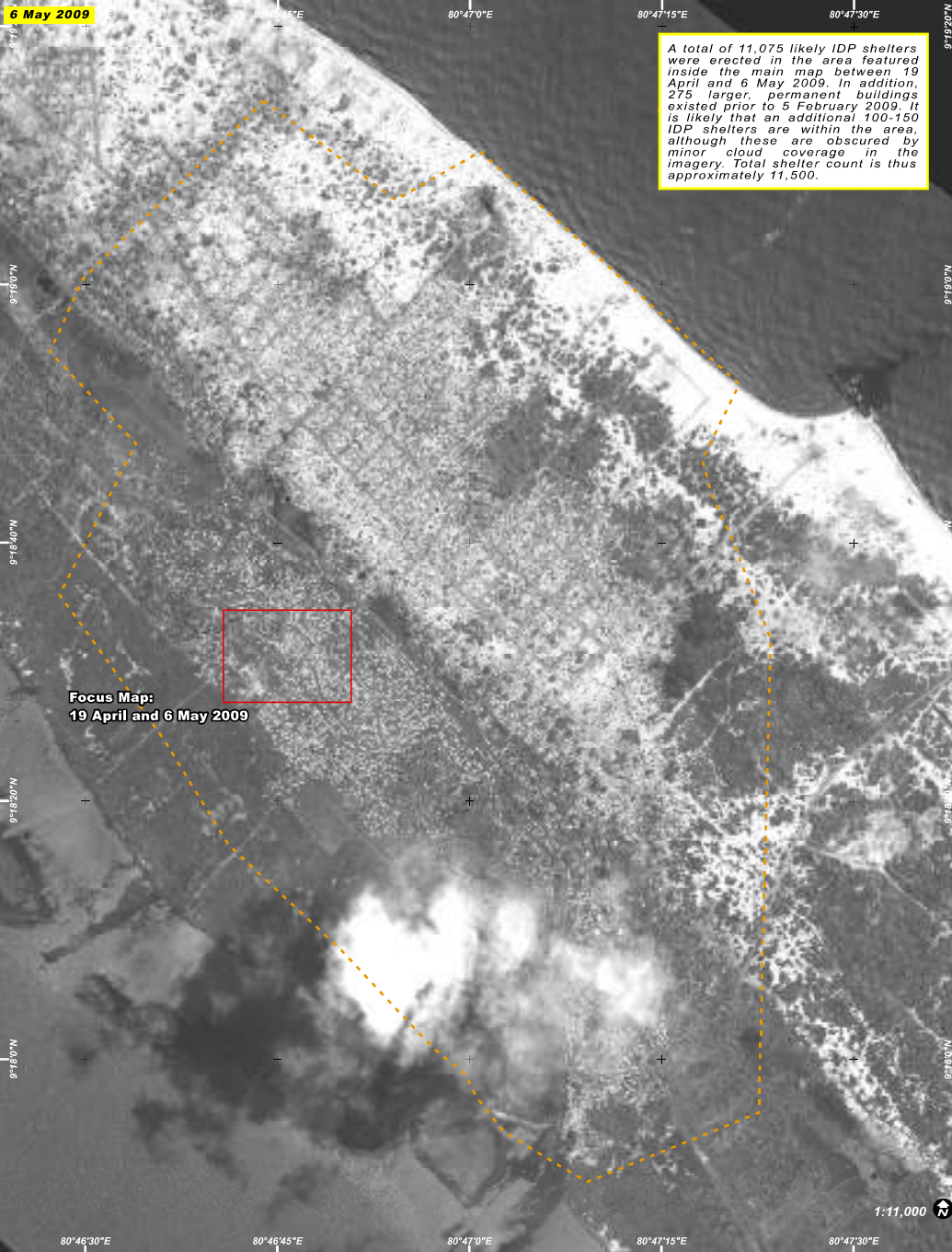
0.5 meter. This is an initial assessment and has not been verified in the field.

**SECURITY
EVENT**

13 MAY 2009

MAP VERSION 1.0

SE-2009-000011-LKA



Building density increases from blue to red to identify the highest concentrations of buildings within the New Safety Zone.



Satellite Data WorldView1
 Date 19 April & 6 May 2009
 Resolution 0.5 meters
 Copyright DigitalGlobe 2009 Euroimage
 Source US Dept. of State (HUI) / Digital Globe
 Analysis UNITAR/UNOSAT
 GIS Date OCHA, Vectorized from imagery by UNITAR/UNOSAT

UNOSAT Contact Information: info@unosat.org
 24/7 Hotline: +41 76 487 4395
www.unitar.org/unosat

The depiction and use of boundaries, geographic names and related data shown here are not warranted to be error-free nor do they imply official endorsement or acceptance by the United Nations. UNOSAT is a program of the United Nations Institute for Training and Research (UNITAR), providing satellite imagery & related geographic information, research and analysis to UN humanitarian & development agencies & their implementing partners.

