

IDP SHELTER ASSESSMENT FOR CIVILIAN SAFETY ZONE (CSZ) - MULATTIVU DISTRICT, SRI LANKA

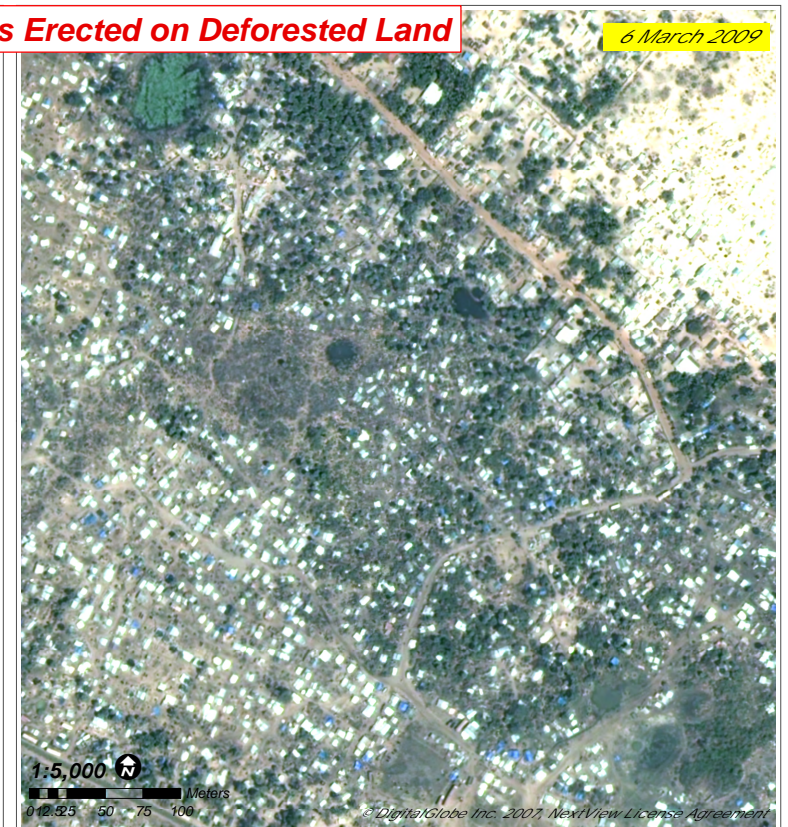
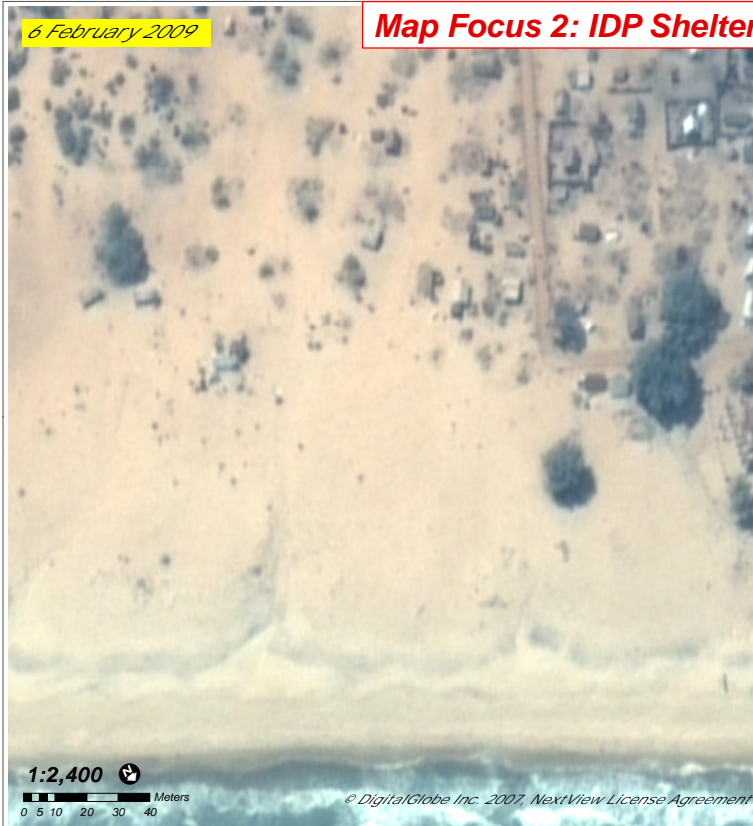
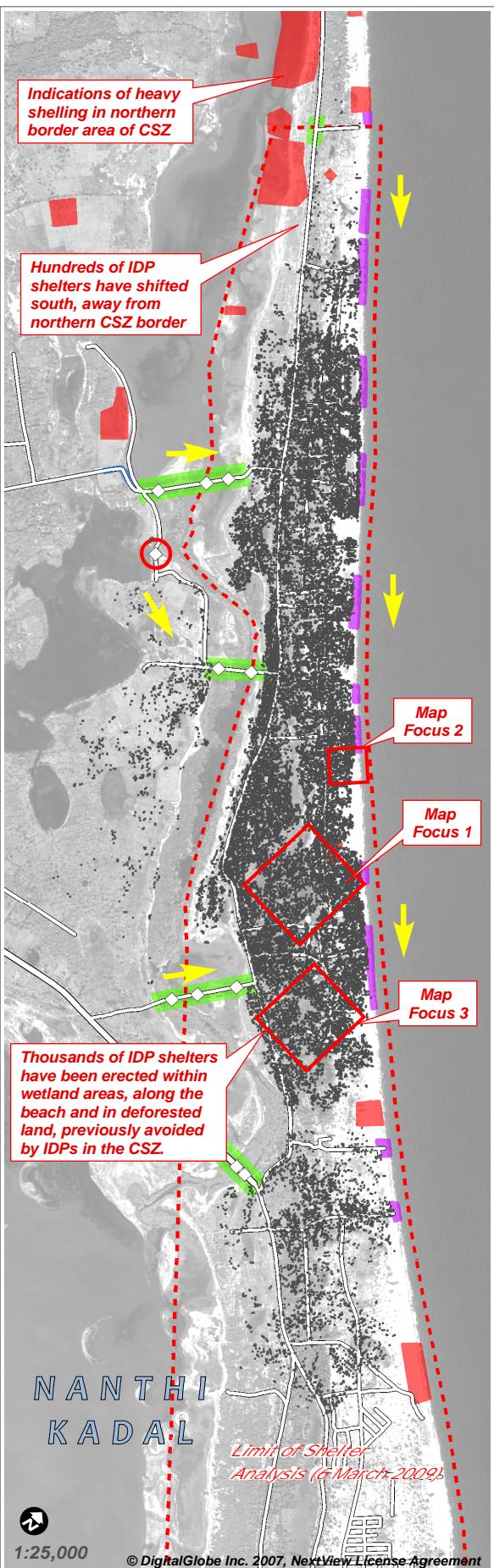
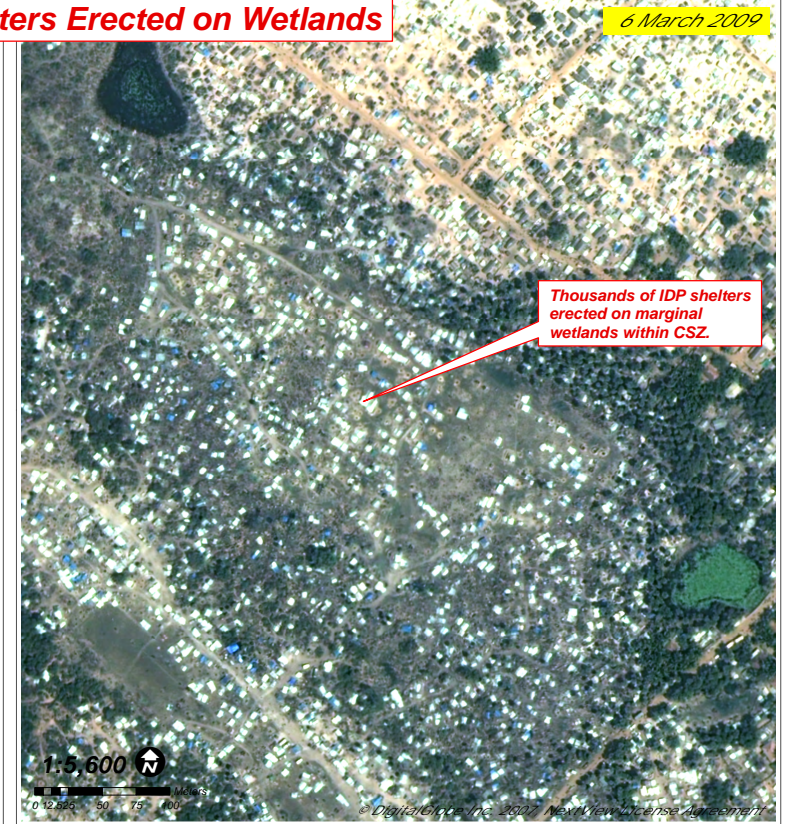
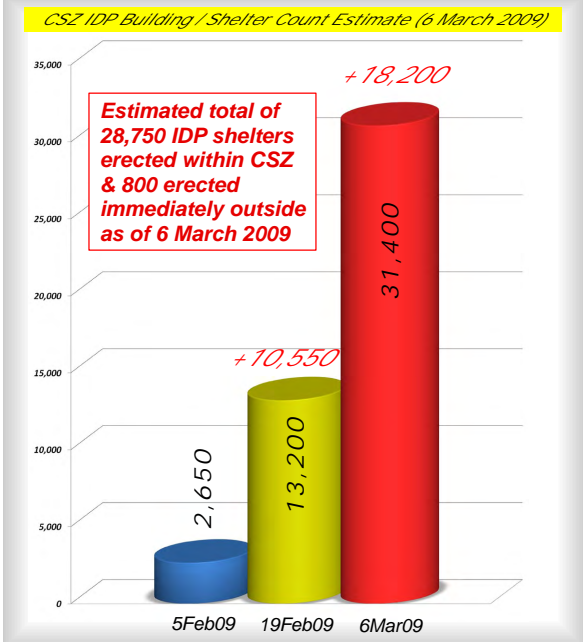
23 MARCH 2009 - MAP VERSION 1.0 - UNOSAT-2009-000014-LKA

A satellite-derived estimate based on automatic detection methods, indicates there are approximately 31,400 buildings / shelters within the CSZ and approximately 800 additional shelters immediately outside the zone as of 6 March 2009. This is an increase of approximately 18,200 from the count estimate of 13,200 on 19 February, and a

total increase of over 28,750 from 5 February 2009. Note that the satellite imagery from 6 March 2009 did not cover the southern portion of the CSZ and thus the total shelter count is likely to be higher. The count from 5 February (2,650) represented almost all fixed buildings, and not tent shelters associated with IDP presence. Because of this rapid influx of IDPs,

the available land for shelter placement has decreased, forcing thousands of IDPs arriving in late February and early March to locate their tents on marginal lands previously avoided by earlier IDP arrivals in the CSZ. As the three satellite imagery focus maps illustrate below, thousands of IDP shelters have been erected in wetland areas prone to

flooding, along the beach within 200m of the coastline as well as on deforested land, recently cleared for new settlement. Analysis was done with WorldView-1 satellite imagery from 5, 18-19 February & QuickBird imagery from 6 March 2009. This is an initial assessment and has not been verified in the field.



- Map Legend**
- Building / IDP Tent
 - Bridge (Culvert)
 - Road / Bridge Obstacle
 - Primary Road
 - Secondary Road
 - Civilian Safe Zone (CSZ)
 - Damage Sites
 - IDP Transit Route into CSZ
 - General shift of IDP shelters between 19 Feb & 6 Mar 2009
 - Small Vessel Beach Landing Site
 - Vehicle Concentrations

Satellite Data WorldView & QuickBird
 Date 5, 18-19 Feb09 / 6 Mar09
 Resolution 0.5m / 0.6m
 Copyright NextView / DigitalGlobe 2009
 Source US Dept. of State (HIU)
 Analysis UNOSAT
 Production 23 March 2009
 GIS Data Vectorized by UNOSAT
 Projection UTM Zone 44 North
 Datum WGS-84

unitar
United Nations Institute for Training and Research

UNOSAT
satellite solutions for all

The depiction and use of boundaries, geographic names and related data shown here are not warranted to be error-free nor do they imply official endorsement or acceptance by the United Nations. UNOSAT is a program of the United Nations Institute for Training and Research (UNITAR), providing satellite imagery & related geographic information, research and analysis to UN humanitarian & development agencies & their implementing partners.

Contact Information: info@unosat.org 24/7 Hotline: +41 76 487 4998 www.unosat.org